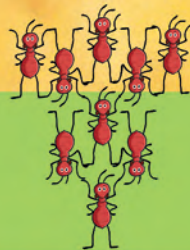


Close up

Ants have six legs. Their bodies are made of three main parts.



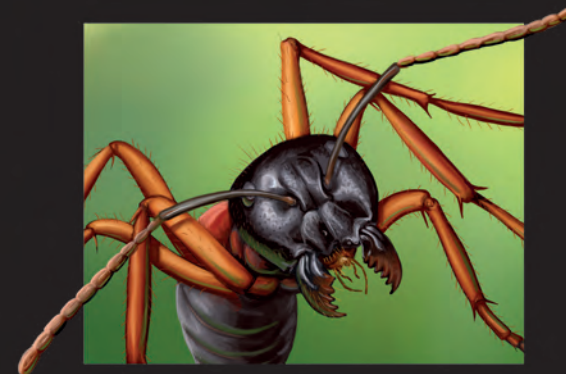
A single ant is strong enough to carry 50 ants.



Ants have feelers on their heads. They use them to touch and smell things.



They have strong jaws that they use to dig, cut, carry and protect themselves.



Their legs have hook-like claws that they use to climb plants.



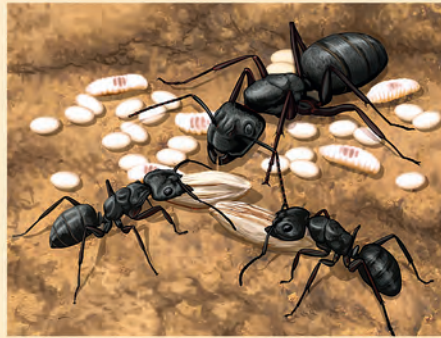
They can even walk upside-down.

Busy ants

Ants live together in huge groups, called colonies. The ants in a colony all have different jobs to do.



The queen is the mother of all the ants in the colony. She lays lots of eggs.



Worker ants take care of the other ants and bring food to them.

Some types of colonies have soldier ants. They fight off attackers.



This soldier ant has huge jaws.

It uses them to attack its enemies and to chop up large pieces of food.



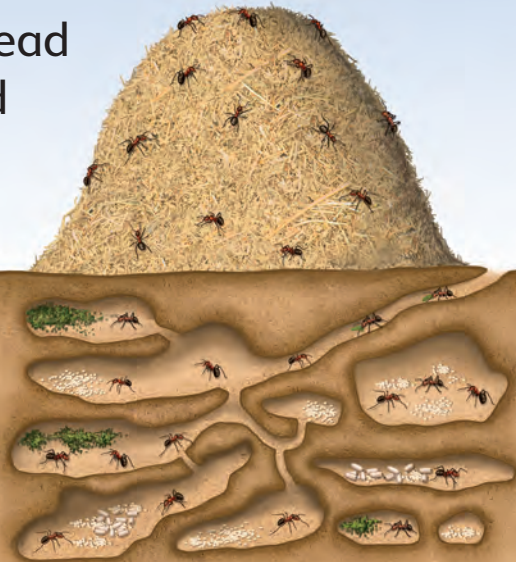
Some queen ants can lay thousands of eggs in one day.

Building nests

Most ants live in nests. The nests can be different shapes and sizes.

Wood ants gather dead leaves and twigs and make a mound.

They build their nest by digging rooms and tunnels underneath.



If the nest gets cold, they sit in the sun, then go inside. Their body heat warms it.

8



If the nest gets hot, they dig holes in the mound so cool air can flow in.

These weaver ants have made a nest from leaves glued together with sticky silk.



Some tiny ants make their nests inside acorns.

9